

Area Covered

The following areas are serviced by
Dharah Gibinj (Casino AMS)

Bonalbo

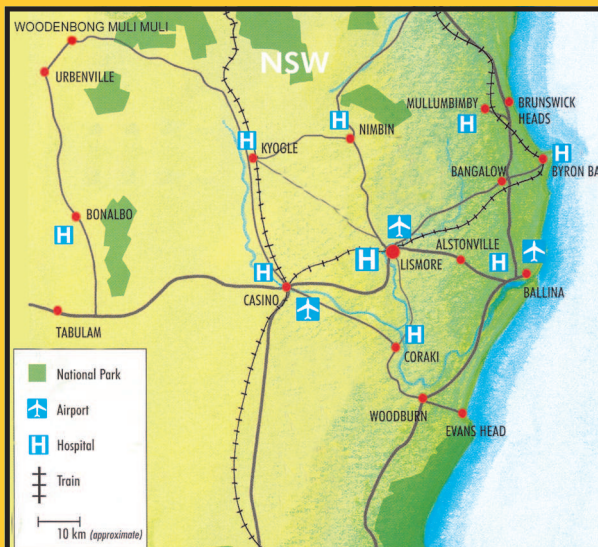
Casino

Coraki-Boxridge

Kyogle

Tabulam

Woodenbong-Muli Muli



"Rubbing & Healing"

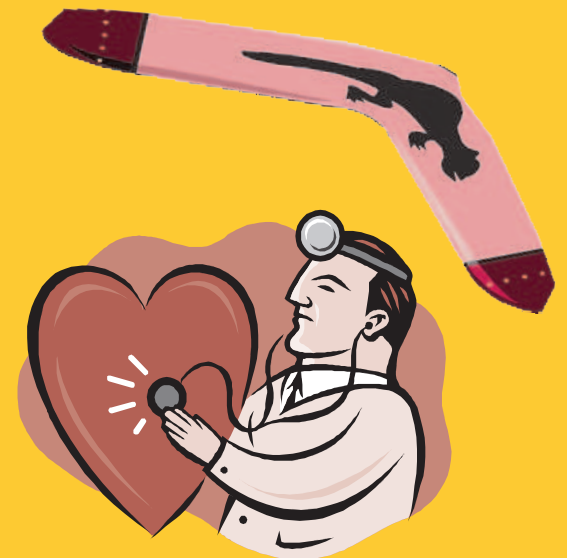
43 Johnston Street, Casino, NSW 2470

Tel. 02 6662 3514

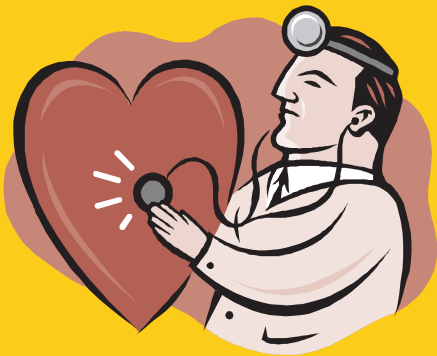
Fax 02 6662 4849

www.casinoams.com

Aboriginal Male
Health Worker
Dhara Gibinj
"Rubbing and Healing"



CONFIDENTIALITY
IS STRICTLY ADHERED TO



Respiratory Clinic

- These clinics assess the health conditions of client's lungs/respiratory system
- Organised in conjunction with Dr Laird (lung specialist) and "Healthy Heart Team"
- Information and advice given to clients of risk factors relating to their own respiratory health, heart disease, diabetes & other health conditions

Boomerang Caring Program

(support group for Goorie men)

Helping men to find solutions to problems, dealing with family, community & personal conflict

Working with community Groups

Building positive life skills

Ongoing support given to the Drug & Alcohol Worker & Social & Emotional Worker (both male) in these Programs

Adult Male Health Assessments

Organised interviews with clients on this category

Each client gets complete Health Assessment

Initial Doctors appointments arranged

Follow up when required

Please feel free to contact me if you feel I may be able to help you.

John Breckenridge,
Aboriginal Male Health Worker,
Dharah Gibinj, Tel. 02 6662 3514